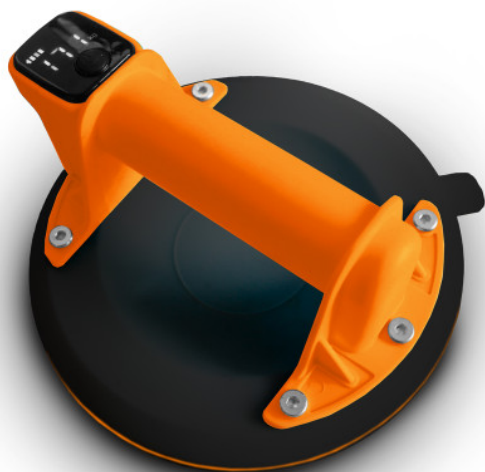


| | | | | | | | |
|-------|-----------|---------------|-------|------------------|--------|--------------------|------------|
| TILER | DRYWALLER | HOUSE PAINTER | MASON | FACADE INSTALLER | ROOFER | FLOORING INSTALLER | LANDSCAPER |
|-------|-----------|---------------|-------|------------------|--------|--------------------|------------|



CORDLESS SUCTION CUP WITH DIGITAL DISPLAY

Ref. : 269555
Gencod 3476062695558
UPC: -

Double lip.
Digital display for pressure control = safety and reliability.
Automatic on/off function : the pump stops when the required pressure is reached.
The display then shows 200 kg.
Automatic pressure regulation : below 160 kg, the pump switches on and draws vacuum again until 200 kg is reached.
Double-click ON/OFF button to release pressure and tab for easy removal.
For smooth and rough surfaces.
Carrying case and protective cover included.
CE certified.

Specifications :
Diameter : 198 mm.
Handle length : 110 mm.
Net weight : 1,06 kg.
Max. capacity : 130 kg.
Built-in battery : 3,7 V - 1800 mAh Li-ion.
Rated power : 6,6 Wh.
Autonomy : 8-10 h.
Charging cable : USB C.
Charging time : around 3 h.